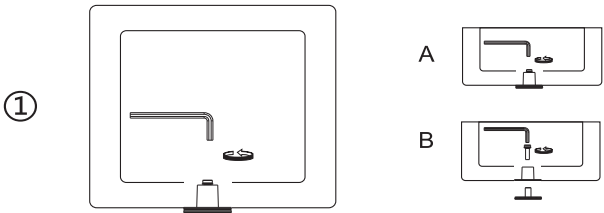


# Installation Instructions

KARBON

Step 1. Remove Allen Bolt using a 10 MM Allen wrench (included). Remove the anchoring device from bottom of the safe.



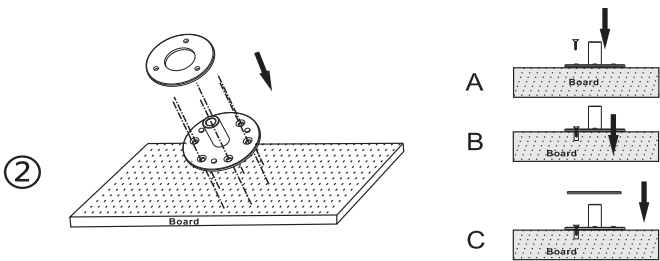
Step 2. Fasten the anchoring device to floor using the included screws/plastic plugs.

## A.Timber Floors

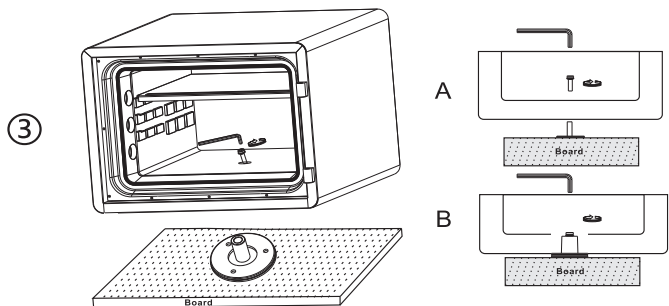
- Pre-drill holes in the desired location.
- Insert the screws through the holes in the anchor and into the timber.
- Tighten screws using a Philips Head Screwdriver

## B.Concrete Floors

- Drill 8 mm holes in the desired location.
- Insert the Plastic Plugs into the Holes
- Insert the screws through the holes in the anchor and into the Plastic Plugs.
- Tighten screws using a Philips Head Screwdriver



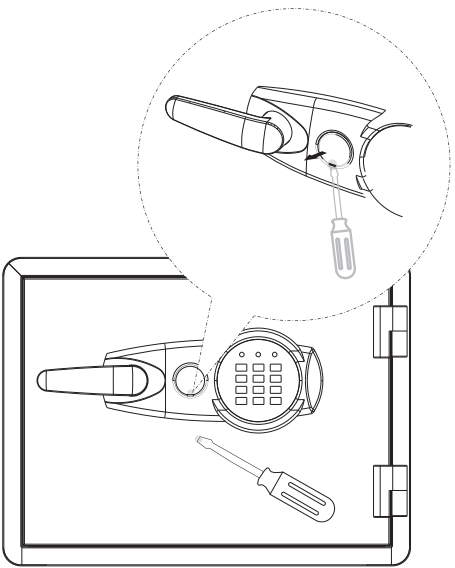
Step 3. Place the safe down over top of the anchor and fasten with the Allen bolt.



# Emergency Key Cover Opening

KARBON

Step 1. Use a slotted screwdriver to remove key cover.



# Shelf Adjusting

Step 1. Raise the shelf upward and pull the shelf out.

